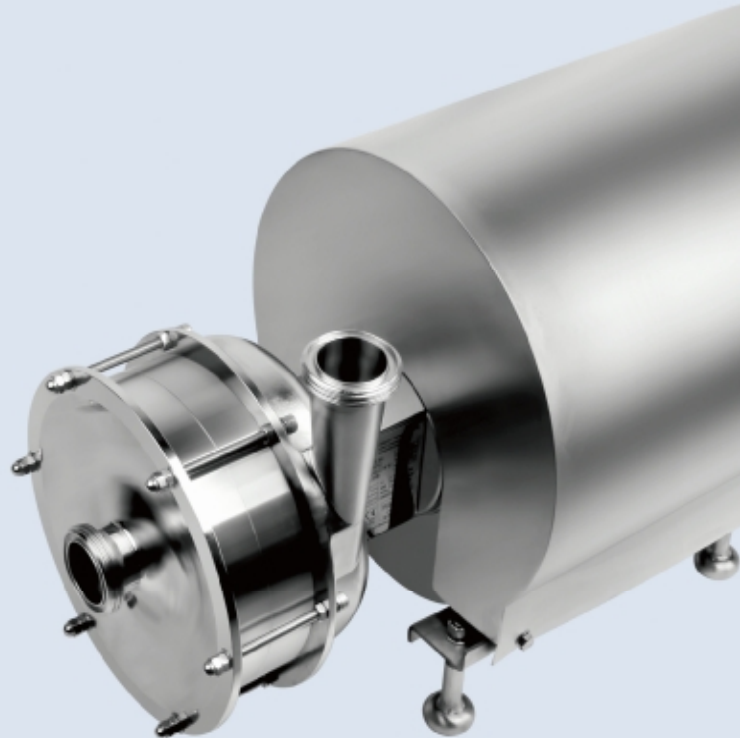
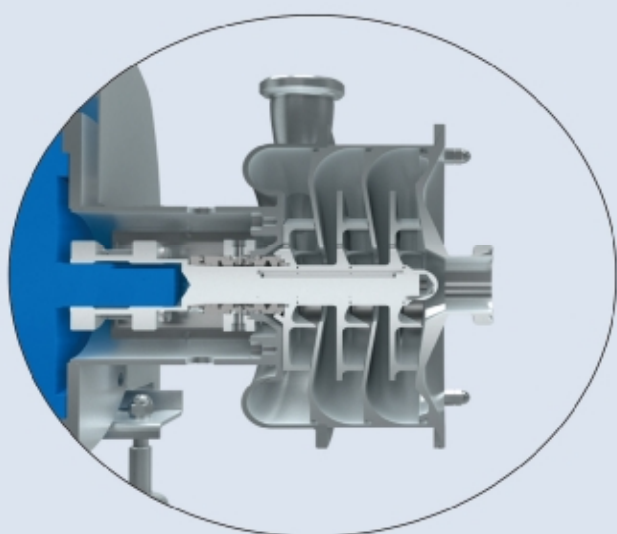




国家高新技术企业 浙江省著名商标



High purity pumps

高洁净泵

0.3.5

东正一直致力于技术革新
是您值得信赖的事业伙伴
**Donjoy has been committed to
technical innovation, is your trustworthy
business partner!**

目录册技术资料仅供参考，
东正保留更新和升级的权利，恕不另行通知！

Catalogue technical information only for reference.
Donjoy reserves the rights to update and upgrade
without prior notice.

法律声明:

目录样册版权归东正所有，
如有抄袭，必将追究其法律责任和经济赔偿。
东正已获得国家版权局书刊号。
东正诸多产品技术，都具有专利保护，
如有抄袭，必将追究法律责任和经济赔偿。

Legal statement:

Copyright of the catalogue belongs to Donjoy.
If there is plagiarism, it will be investigated for legal
responsibility and economic compensation.
Donjoy has been granted publications number by
Chinese National Copyright.
Donjoy products and technology are with patent protection.
If there is plagiarism, it will be investigated for legal
responsibility and economic compensation.

温州空港新区总部生产基地 Wenzhou airport economic zone production base



占地面积约29000m²，总投资约1.2亿RMB，约2000万USD。

Covering an area of 29000 m², with total investment after construction is expected to 120 million yuan, about 20 million USD.

领先源于创新 创新源于专业

东正的专业与品质的邂逅源于创新的精神

东正创立于1993年，注册资本6088万(约1000万USD)，是一家专注于高精度PID阀门定位器，阀门控制单元，阀门位置反馈器、智能自控阀、比例调节阀、过程控制阀、高洁净泵、均质混合泵、清洗技术、压力容器和管道安全控制技术、高洁净管材和管道配件，集研发、生产与销售为一体的国家高新技术企业。产品用途涉及行业和领域有生物制药、食品饮料、酿酒、精细化工等工业领域。东正领先的技术和持续创新解决方案，对满足全球，尤其是新兴市场不断增长生物制药和食品饮料行业的需求起到了积极作用。

东正制造的产品母材料、加工技术、焊接技术、表面处理等技术指标均已达到国际领先水平。且符合ASME BPE、EHEDG、FDA、3A等一系列国际标准和规范要求。先后通过了由德国 TÜV 机构实施的欧盟承压设备指令(PED-97/23/EC)和(MD-06/42/EC)认证；美国 3A机构实施的3-A卫生标准认证；中国安全阀特种制造设备(TS)许可证和中国质量认证中心CQC ISO9001:2015 质量管理体系认证等多项国际权威认证。

东正凭借领先的技术、优异的品质和完善的售后服务体系，公司荣获为《国家高新技术企业》，《浙江省著名商标》、《科技型企业》、《创新型企业》、《专利示范企业》、《研发中心企业》，《守合同重信用AAA企业》等众多荣誉称号。





Leading from innovation, innovation from the professionalism! Donjoy's professionalism and quality come from the spirit of innovation!

Donjoy was founded in 1993, with registered capital RMB 60.88 million (about 10million USD) We focus on developing high-precision PID valve positioner, Valve Control unit, Valve Position feedback device, intelligent automatic control valve, proportional valve, process control valve, high purity pump, homogeneous mixing pump, cleaning technology, pressure vessel, pipeline safety control technology, high clean pipe fitting&pipeline accessories and integrating r&d, production and sales as an integrated national high-tech enterprises. Donjoy's products are widely used in bio-pharmaceutical, food and beverage, wine, fine chemicals and other industrial fields. Donjoy's leading technology and innovation solutions meets growing demand in the industry of bio-pharmaceutical, food and beverage from the whole world, special emerging market.

Raw material, processing technology, welding technology, surface treatment and other technology from Donjoy have achieved advanced level in international market. It also complies with a series of international standards and specifications such as ASME BPE, EHEDG, FDA and 3A , It has passed the EU Pressure Equipment Directive (PED-97/23/EC) and (MD-06/42/EC) issued by the German TÜV organization; the 3-A health standard certification issued by the 3A organization; China Safety Valve Special Manufacturing Equipment (TS) License , China Quality Certification Center (CQC) and Quality Management System Certification (ISO9001:2015) and many other international authoritative certifications.

With advanced technology, excellent quality and perfect after-sales service system, Donjoy was awarded as National High-tech Enterprise, Provincial Famous Trademark, Science and Technology Enterprise, Innovative Enterprise, Patent Demonstration Enterprise, R & D Center Enterprise, AAA Credit Enterprise and many other honorary.



全面的创新技术能力
为您带来创造性的解决方案



Comprehensive innovation technology, capabilities Bring you creative solutions

东正拥有诸多领先的产品技术，如各种比例调节阀、过程自控阀、生物制药隔膜阀、防混双座阀、压力容器和管道安全控制技术、清洗技术、高洁净转子泵、螺杆泵、离心泵、自吸泵、均质乳化泵、均质混合泵、卫生管件和无菌管件等.....

Donjoy owes many leading technology products, such as various proportioning regulating valve, process automatic control valve, pharmaceutical diaphragm valve, mixed double seat valve, pressure vessel and pipeline safety control technology, clean technology, high cleanliness rotor pump, screw pump, centrifugal pump, self-priming pump, homogeneous emulsion pump, homogeneous mixing pump, sanitary fittings, aseptic pipe fittings and so on.

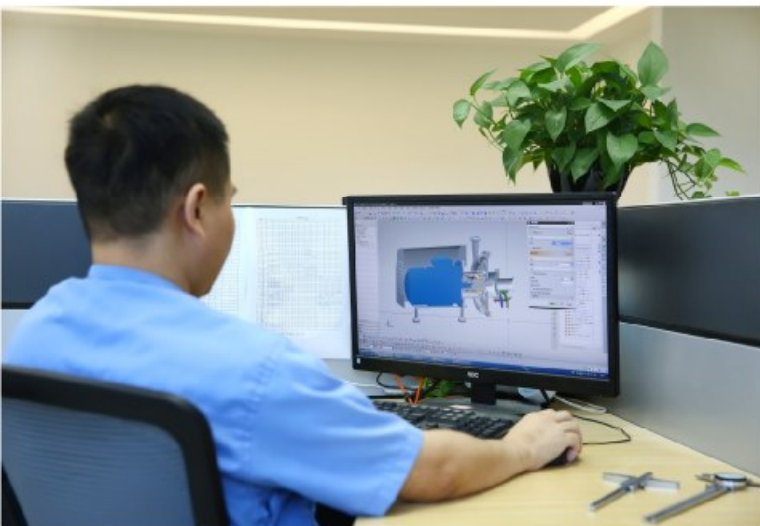


企业的成功源于创新。东正的成功基于创始人“开拓创新、追求卓越”的创新精神，1994年东正开发了第一只高洁净的蝶阀，这只蝶阀是东正的起始点。

控制器的研发成就完美的过程自动控制，2004年东正成功研发了技术领先的阀门定位器、阀门控制单元。

高洁净泵的研发确保物料输送的洁净，2006年东正成功研发了高精度的转子泵、离心泵、混合泵、自吸泵。

我们一直走在行业与时代的前沿，把不断革新、日新月异的市场发展和客户需求作为自身最大的挑战。东正有自己的独立的思维和视野，始终保持领先致力于产品在新经济领域中的开发和应用。未来我们将一如既往的坚持以技术创新、以顾客为导向走向新的成功。



Success of an enterprise stems from innovation. Donjoy's success is based on the founder's innovative spirit of "pioneering innovation and pursuing excellence". In 1994, Donjoy developed the first highly purity butterfly valve, which was the starting point of Donjoy.

Research and development of the controller achieves perfect automatic process control. In 2004, Donjoy has successfully developed advanced valve positioner and valve control unit.

Research and development of high purity pump to ensure the purity of medium transportation. In 2006, Donjoy has successfully developed high precision lobe pump, centrifugal pump, mixing pump and self-priming pump.

We are always at the forefront of the industry and times, taking the continuous innovation of technology, rapid market development and customer demand as our biggest challenge. Donjoy has its own independent thought and horizons, and always maintains a leading position in the development and application of products in the new economic field. In future, we will continue to adhere to technological innovation and customer-oriented towards new success.



精益加工车间 Lean processing workshop



东正以科学技术领先为第一生产力，也是企业核心竞争力。只有不断投入核心技术研发和创新，不断追求卓越、精益求精、以先进生产设备，严格的质量管理体系，严谨的检测流程、保证每款产品的优良性能。

Donjoy takes leading in science and technology as the first productivity as well as the core competitiveness of the enterprise. With continuous investment in core technology research, development and innovation; constant pursuit of prominence and excellence; advanced production equipment; strict quality management system; and rigorous testing process, we ensure excellent quality and performance of every product.



机器人生产线 Robot production line

装配车间 Assembly workshop



荣誉与资质 Honor and qualification

	<p>3A</p> <p>东正是美国3A认证组织的成员。3A是一个自愿组织，致力于维护公共卫生和奶制品产品质量通过独特的行业监管程序的设备，用于处理乳制品的卫生标准3-A。</p> <p>Donjoy is a member of US 3A Certification Organization, 3A is a voluntary organization dedicated to maintaining the quality of public health and dairy products through a unique industry regulatory process for the treatment of dairy product hygiene standards 3-A.</p> <ul style="list-style-type: none"> ◆54-02 (Diaphragm-Type Valves)-NUMBER: 1580-隔膜阀 ◆02-11 (Centrifugal and Positive Rotary Pumps) NUMBER: 1579-高洁净泵 ◆85-03 (Double-Seal Mixproof Valves) NUMBER: 1797-双座防混阀 ◆64-03 (Pressure Reducing and Back Pressure Regulating Valves) NUMBER: 1764-减压阀&调节阀 ◆53-05 (Compression-Type Valves) -NUMBER: 1782-单座阀(单向阀) ◆68-03 (Ball-Type Valves) NUMBER: 1785-球阀 ◆55-02 (Boot Seal-Type Valves) NUMBER: 1783-无菌取样阀 ◆04-02 (Personnel Access Ports for Wet Applications) NUMBER: 1786-人孔。 ◆63-03 (Sanitary Fittings) NUMBER: 1581-卫生管件
	<p>PED/97/23/EC&MD/06/42/EC</p> <p>由德国TÜV机构实施的欧盟承压设备安全指令 (PED-97/23/EC)，机械安全指令MD-06/42/EC。</p> <p>EU Pressure Equipment Safety Directive (PED-97/23/EC), Machinery Safety Directive MD-06/42/EC, implemented by TÜV, Germany.</p> <ul style="list-style-type: none"> ◆MD/06/42/EC NUMBER: 705201402401-00 - LOBE PUMP转子泵 ◆MD/06/42/EC NUMBER: 705201616101-00 - Centrifugal pump 离心泵 ◆PED/97/23/EC NUMBER: DGR - 0036-QS-1153-14-Valves 阀门系列
	<p>安全阀特种制造许可证(TS) Safety valve special manufacturing license</p> <p>东正通过了安全阀和设备制造许可证，目前是国内首家通过“高洁净安全阀特种制造许可证”的企业(安全附件及安全保护装置)。</p> <p>◆其证书编号：TSF 733008-2019</p> <p>Donjoy has passed the safety valve special equipment manufacturing license. Recently, is the first enterprise in China to pass the "Special Manufacturing License for High Clean Safety Valves" (safety accessories and safety protection devices). ◆Certificate number: TSF 733008-2019</p>
	<p>FDA.177.2600</p> <p>东正制造的高洁净阀门和泵以及流体设备等，与物料接触密封面全部通过或符合美国食品和药品管理局和联邦法规第21条即，CFR 21 FDA177.2600和FDA177.1550认证，其涵盖：EPDM VITON (FPM) SILICON HNBR 等橡胶和PTFE 塑料材料。 ◆符合美国 3-A-18-03-CLASS - II</p> <p>The seals of Donjoy's high-cleaning valves, pumps and fluid equipment that contact with material, all pass or comply with the US Food and Drug Administration and Federal Regulations issue 21, i.e. CFR 21 FDA177.2600 and FDA177.1550 certification. The seals cover : EPDM, VITON (FPM), SILICON, HNBR and other rubber & PTFE plastic material. ◆Meets US 3-A-18-03-CLASS - II</p>
	<p>ISO-9001-2015</p> <p>东正通过中国质量认证中心CQC ISO9001-2015/GB/T19001-2015企业质量管理体系认证。 ◆其证书编号：00117Q38464R4M/3302</p> <p>Donjoy passed the China Quality Certification Center CQC, ISO9001-2015/GB/T19001-2015 enterprise quality management system certification. ◆Its certificate number is 00117Q38464R4M/3302.</p>
	<p>卫生许可证 Hygiene License</p> <p>东正通过了省卫生厅卫生阀门、卫生管件等检验且获得了其颁发的证书。 ◆其批准文号：第0056号</p> <p>Donjoy passed the inspection of sanitary valves and sanitary fittings of the Provincial Health Department and obtained the certificate issued by it. ◆Its approval number: No. 0056</p>
	<p>国家高新技术企业 National High-Tech Enterprise</p> <p>东正，经过20余年发展和技术研发，2011年被评定为国家高新技术企业。</p> <p>Donjoy, after more than 20 years of development and technology research & development, was assessed as a national high-tech enterprise in 2011.</p>
	<p>浙江省著名商标 Zhejiang province famous trademark</p> <p>东正，凭借先进的技术、优良的品质和完善的售后服务体系，2012年被浙江省工商厅评定为浙江省著名商标。</p> <p>Donjoy, by virtue of advanced technology, excellent quality and perfect after-sales service system, was recognized as a famous trademark of Zhejiang Province by the Industrial and Commercial Bureau of Zhejiang Province in 2012.</p>

东正不但拥有以上认证和荣誉，且被评定为省科技型、创新型、专利示范、研发中心、重合同守信用等诸多荣誉。并拥有100多项专利技术。

Donjoy not only owes above certification and honors, but also has been evaluated as provincial science and technology type, innovation, patent demonstration, research and development center, contract keeping and other honors. It also owes more than 100 patented technologies.

荣誉与资质 Honor and qualification



东正不但拥有以上认证和荣誉，且被评定为省科技型、创新型、专利示范、研发中心、重合同守信用等诸多荣誉。并拥有100多项专利技术。

Donjoy not only owes above certification and honors, but also has been evaluated as provincial science and technology type, innovation, patent demonstration, research and development center, contract keeping and other honors. It also owes more than 100 patented technologies.

工艺管道连接对泵使用的影响

The effect of pipe connection on pump usage




ABB
IE2 IEC 60034-1
3-Motor

No.	V	Hz	kw	r/min	A	cosφ	F	IP55	Duty
	230△	50	1.5	1441	6.11	0.74		S1	
	400 Y	50	1.5	1441	3.53	0.74		S1	
	230△	50	1.5	1435	6.10	0.78		S1	
	380 Y	50	1.5	1435	3.53	0.78		S1	
	460 Y	60	1.5	1741	3.22	0.70		S1	
	440 Y	60	1.5	1735	3.17	0.74		S1	

50Hz:IE2-82.8(100%)
60Hz:IE2-84.0(100%)
Prod.code 3GBA092510-ASCCN
6205-2Z/C3 6024-2Z/C3 23 kg

说明：铭牌图片仅供格式参考，最终数据以实际铭牌为准。
Remark: The format of the rating plate is for reference only, the final figure will be subject to the actual rating plate.

宽电压电机 Wide Voltage Motor

功率 Power(KW)	电压范围 Voltage	功率 Power(KW)	电压范围 Voltage
0.55	210V-230V/50HZ	4.0-5.5	360V-400V/50HZ
0.75		7.5-11	
1.1-1.5	420V-460V/60HZ	15-18.5	420V-460V/60HZ
2.2-3.0		22-30	

注意：电机采用 IEC EN IE2 能效等级，PTC 热敏电阻。（相当于中国二级能效）
Note: The motor adopts IEC EN IE2 energy efficiency class, PTC thermistor. (Corresponding to China level two energy efficiency)
注意：其他电机功率、电压、频率等，请联系东正。
Note: Other motor power, voltage, frequency, etc., please contact DONJOY

O型圈配置 O-ring Configuration

我们所采用密封橡胶都符合 FDA 177.2600; 3-A-18-03; Class II; USP Class VI Chapter 88 GB 4806.11; 等各种卫生高洁净的要求。

EPDM=标准

适用范围：温度 -10°C 到 130°C; PH 值约 5-9, 可耐受各种卫生领域介质及工业化学品, 成本低(推荐)。

FKM(Viton)=选项

适用范围：温度 -10°C 到 150°C; 可耐受各种卫生领域介质及工业化学品、油品等各种介质。

FFKM=选项

适用范围：温度 -30°C 到 250°C; 可耐受各种卫生领域介质及工业化学品、油品等各种介质, 几乎可以涵盖所有介质, 成本较高。

HNBR=选项

适用范围：温度 -10°C 到 150°C; 可耐受各种卫生领域介质及工业油品等各种介质, 特别适用于油品。

The sealing rubbers we use are in compliance with hygienic and high purity requirements, such as FDA 177.2600; 3-A-18-03; Class II; USP Class VI Chapter 88 GB 4806.11 and so on.

EPDM=Standard

Scope of application: Temperature -10 °C to 130°C; PH value about 5-9, can tolerate with various media in the health field and industrial chemicals, low cost (recommended)

FKM(Viton)=Option

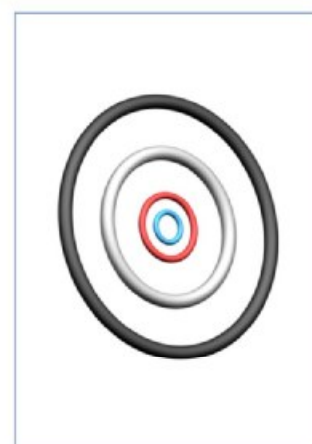
Scope of application: Temperature -10°C to 150 °C; can tolerate with various media in the health field, industrial chemicals, oils and so on.

FFKM=Option

Scope of application: Temperature -30°C to 250°C; can tolerate with various media in the health field, industrial chemicals, oils, etc., can cover almost all media, higher cost

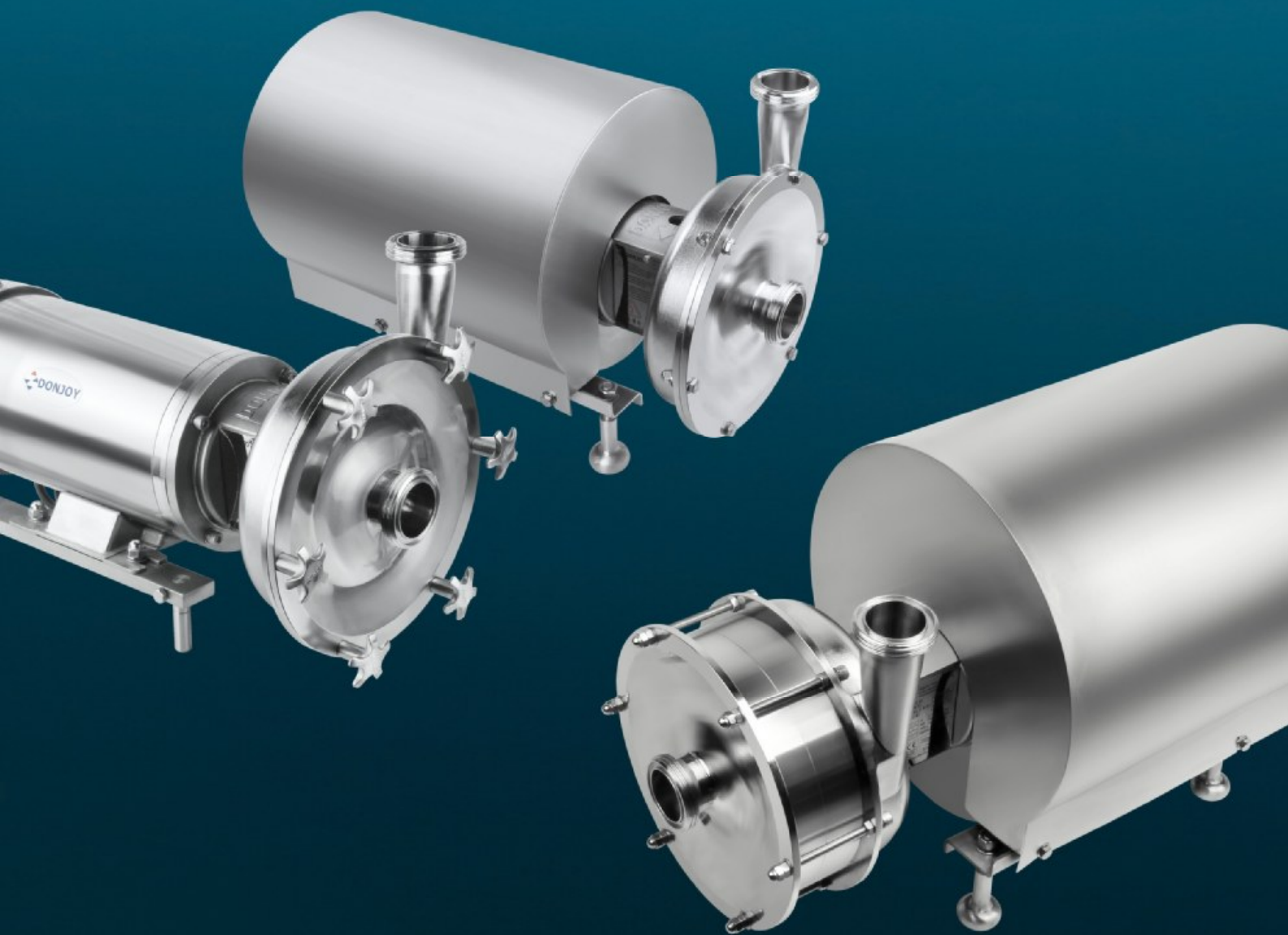
HNBR=Option

Scope of application: Temperature -10 °C to 150°C; can tolerate with various media in the health field, industrial oils, etc., especially suitable for oil products.



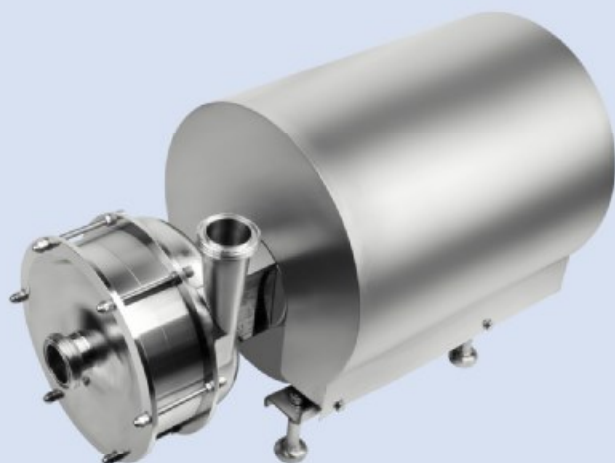
Centrifugal pump series

离心泵系列



DJ-DLX 系列多级离心泵

DJ-DLX serie multi-stage centrifugal pump



高效率、低噪音、高扬程、
维护简单经济、高洁净的解决方案
Solution for high efficiency, Low noise,
High head, simple and economical
maintenance, High purity



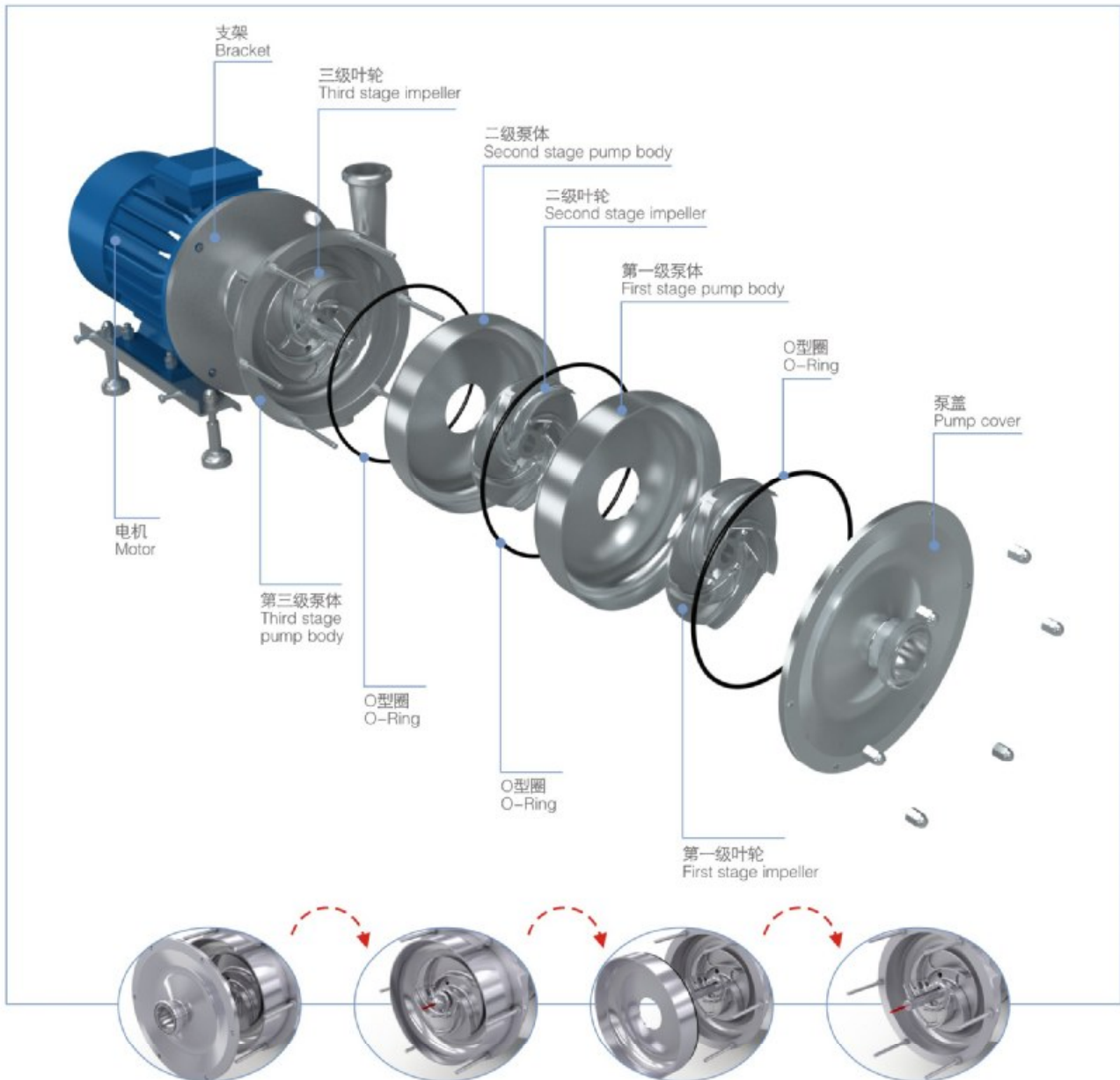
DLX系列离心泵是一款卧式多级开式叶轮的离心泵，它具有卫生、高效率、最高扬程可达180米(18bar)，输送介质柔和且卫生。主要应用于食品和饮料、乳品、啤酒厂碳酸化工艺、CIP 进料、制药工业、纯水泵送(WFI注射水)、生物技术生产、输注(营养液、乙醇)充填站、个人护理、肥皂、护肤霜、洗剂工业、净化处理(CIP 系统)、水技术工艺、半导体生产、金属表面处理等。

The DLX series centrifugal pump is a horizontal multi-stage open impeller centrifugal pump with high purity, high efficiency. Max head can be up to 180m (18 bar). It is soft and hygienic to transport medium. Mainly used in food and beverage, dairy, brewery carbonation process, CIP feed, pharmaceutical industry, pure water pump (WFI injection water), biotechnology production, infusion (nutrient solution, ethanol) filling station, personal care, soap, skin cream, lotion industry, purification treatment (CIP system), water technology, semiconductor production, metal surface treatment, etc.

技术参数 Technical Specifications

最大流量 Max flow	50m ³ /h
最高扬程 Max head	180M
最高温度 Max temperature	-10℃-140℃
材质 Material	304 /316L, 1.4311/1.4404, ASME BPE 316L, 1.4435 NB2 Fe≤0.5%
表面处理 Surface treatment	≤ Ra0.8 μm, ≤ Ra0.6 μm, ≤ Ra0.4 μm
机封 Seal	单机封、双机封 Single, double mechanical seal
机封配置 Seal configuration	详见机封配置表 See mechanical seal configuration table
进/出口连接 Inlet/Outlet connection	螺纹、卡箍、法兰、无菌法兰 Threaded, clamped, flanged, aseptic flanged
认证 Certified	3-A-02-10(N.O.1579); MD/06/42-EC (N.O.70521616101-00); FDA 177.2600; USP CLASS-II; EG/VO1935/2004;

非常简单的维护、
 无需专用工具、无需专业人员
 Simple maintenance, no need of special
 tools and professionals



技术优势

- 维护拆卸和安装时，无需专业人员和专用工具，即可完成。
- 初始使用安装调试时，即使出现短暂反向旋转也不会损坏。
- 叶轮和轴之间是通过键槽连接固定，叶轮和机封动环之间是通过销钉固定，机封静环和泵体之间是通过异形法兰固定。
- 兼容单机封和双机封，只需要更换机封即可实现。

Technical Advantages

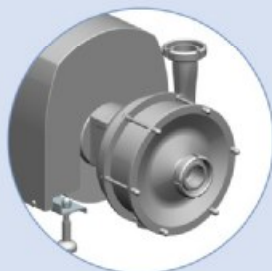
- Maintenance disassembly and installation can be completed without professional staff and special tools.
- Initial use of installation debugging, even if a short reverse rotation will not be damaged.
- Impeller and shaft are connected by keyway; impeller and mechanical seal rotating ring are connected by pin; mechanical seal static ring and pump body are connected by special-shaped flange.
- Compatible with single and double machine seal, only need to change machine seal.

DJ-DLX 系列离心泵各种配置

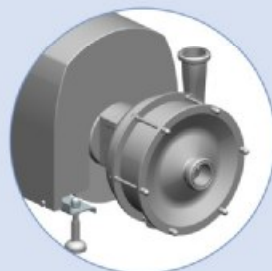
DJ-DLX series centrifugal pump various configurations



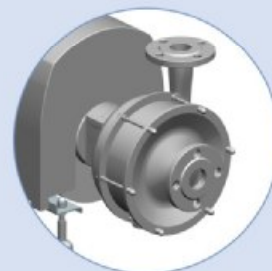
卡箍式
Clamped type



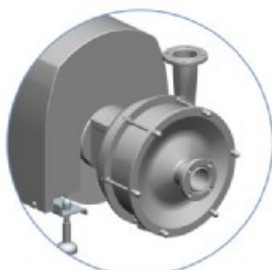
螺母式
Union nut type



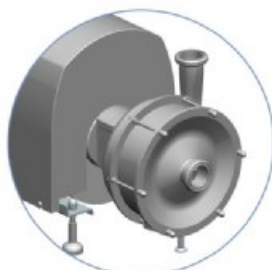
螺纹式
Threaded



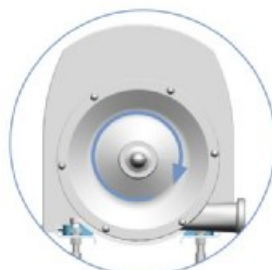
法兰连接进/出口
Flange connection inlet / outlet



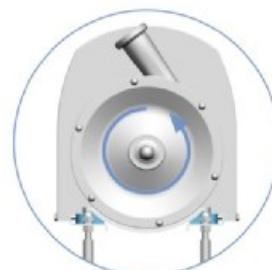
无菌法兰(DIN 11864)进/出口
Aseptic Flange (DIN 11864)
Inlet/Outlet



最低直管排放接口
Bottom straight discharge
outlet



90° ...0° 倾斜出口
90° ...0° inclined outlet



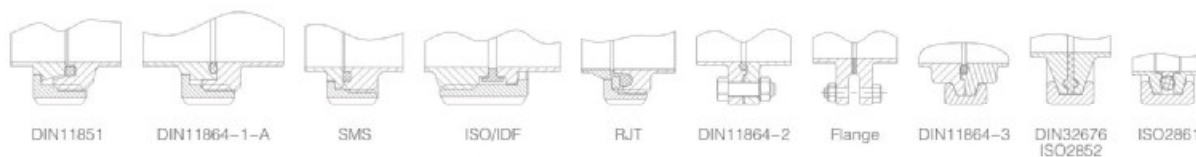
90° ...135° 倾斜出口
90° ...135° inclined outlet

泵进口/出口连接标准

连接方式：螺纹、卡箍、法兰、无菌法兰、KF、等。
标准：DIN SMS ISO IDF RJT ASME BPE 3A I-line

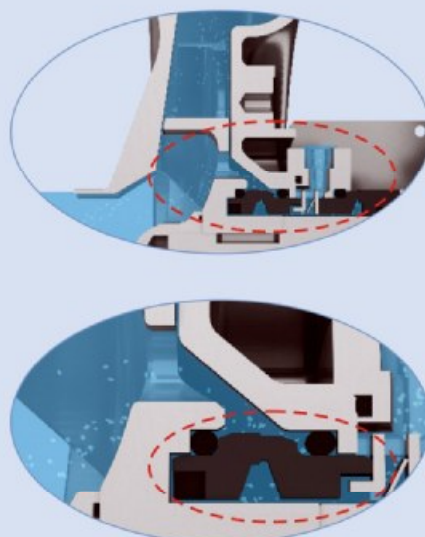
Pump Inlet/outlet Connection Standard

Connection: Threaded, Clamped, Flanged, Aseptic flanged, KF etc.
Standard: DIN SMS ISO IDF RJT ASME BPE 3A I-line



DJ-DLX 系列离心泵机封设计

DJ-DLX series centrifugal pump mechanical seal design



机封系统

DONJOY DJ-DLX 系列离心泵机封，联合欧洲瑞典著名公司合作研发，机封设计具有压力平衡设计、超长使用寿命、极易拆装维护、无需特殊专用工具，卫生洁净符合和认证：欧盟 EHEDG，美国 3-A-02-11，FDA1772600 等高洁净要求。并有丰富的机封配置方案。

Mechanical Seal Features

Donjoy DJ-DLX series centrifugal pump mechanical seal is researched and developed together with European Swedish famous company. The mechanical seal is designed with pressure balance and super long working life, can be disassembled and maintained easily without special tools. The sanitary purity is according to EU EHEDG, USA 3-A-02-11, FDA1772600 and so on, and has lots of configuration.

机封配置 Mechanical Seal Configuration

1) SIC/C/EPDM	标准配置 Standard
2) SIC/C/FKM	选型配置 Optional
3) SIC/C/HNBR	
4) SIC/SIC/EPDM	
5) SIC/SIC/FKM	
6) SIC/SIC/HNBR	
7) TC/TC/EPDM	
8) TC/TC/FKM	
9) TC/TC/HNBR	

注意：以上配置适用于单机封和双机封。
Note: Above configurations is suitable for single and double mechanical seal

DLX 离心泵型号说明

DLX centrifugal pump model instruction



DLX3 10 10t 70 7.5KW 380V 50HZ M 2/1.5" S

Connection standard
连接标准: DIN (D) SMS (S) 3A(A) RJT (R) ISO/IDF (I)

Inlet/Outlet size
进/出口规格

Connection method: Thread (M) Clamp (C) Flange (F)
连接方式: 螺纹(M)卡箍(C)法兰(F)

Motor frequency
电机频率: 50HZ; 60HZ

Voltage: 110V 220V 380V (see table)
电压: 110V 220V 380V (详见选型表)

Motor power: 1.1kw 1.5kw 2.2kw.....
电机功率: 1.1kw 1.5kw 2.2kw.....

Centrifugal pump head (see table)
离心泵扬程(详见选型表)

Centrifugal pump flow(see table)
离心泵流量(详见选型表)

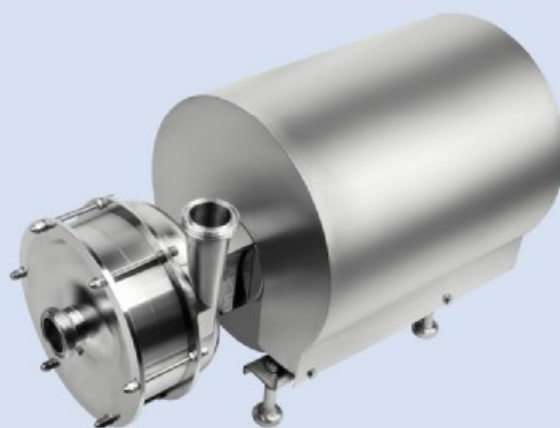
Centrifugal pump model
离心泵型号

Centrifugal pump code:
DL3 (three stage centrifugal pump);
DL2 (two stage centrifugal pump)
离心泵代码: DL3 (三级离心泵); DL2 (二级离心泵)

举例 For example:
DLX3-10-10T-70-7.5KW-380V-50HZ-M-2"/1.5"-S

DLX 离心泵性能选型表

DLX centrifugal pump performance selection table



DLX-2选型表 DLX-2 selection table

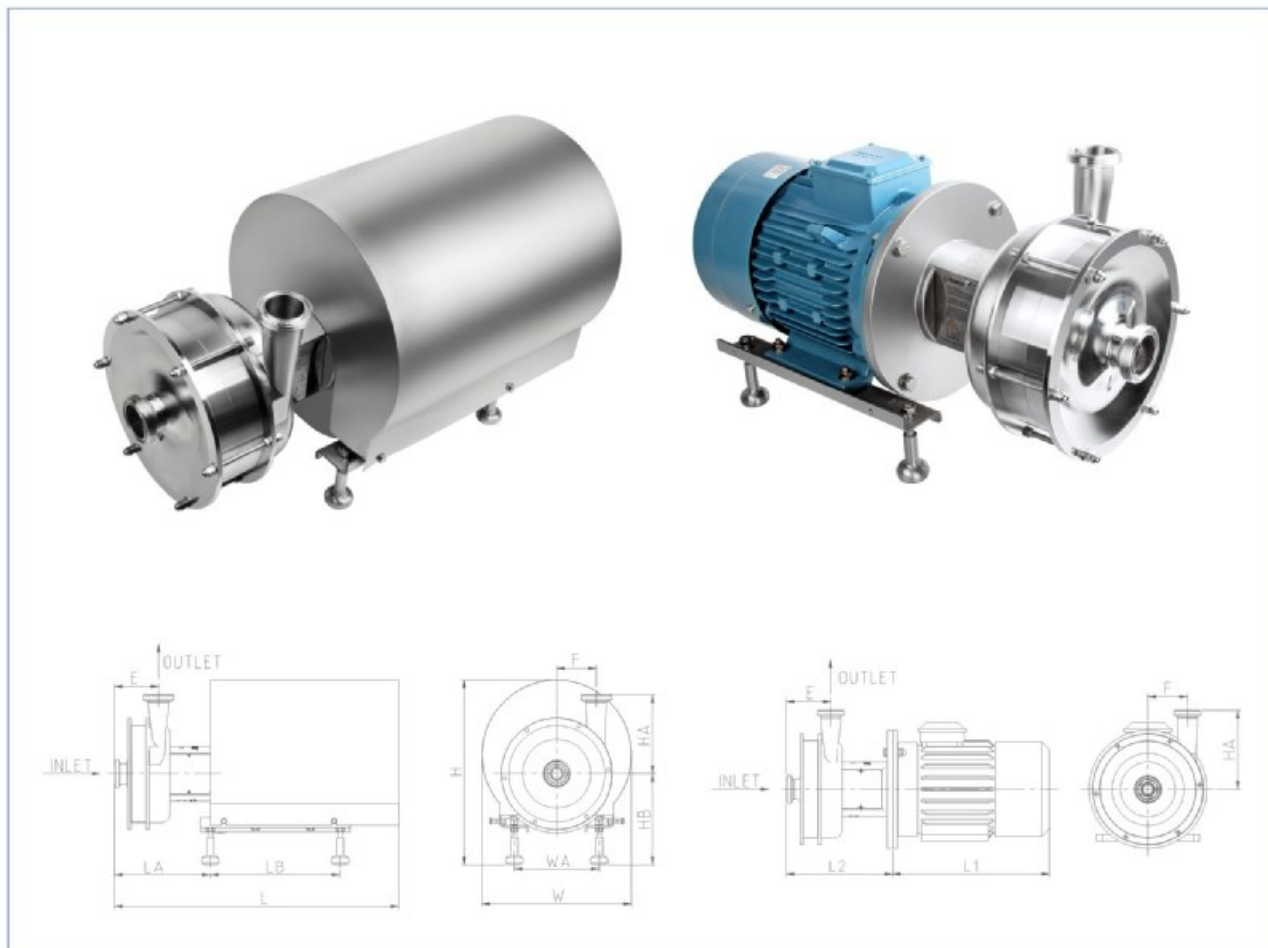
型号 Model	功率 Power (KW)	流量 Flow rate (m³)	扬程 Discharge (M)	进口/出口 Inlet&outlet	裸泵 Weight (KG)
DJ-DLX2-05	1.1	2	40	1.5"/0.75"	27
	1.5	4	36		33
	1.5	5	32		33
DJ-DLX2-10	2.2	5	40	1.5"/1.5"	50
	3	8	40		57
	3	10	40		57
	4	15	36		64
DJ-DLX2-15	3	5	56	2"/1.5"	63
	4	10	50		69
	5	15	44		89
DJ-DLX-2-20	7.5	10	68	2"/2"	95
	7.5	15	66		95
	11	20	63		139
DJ-DLX-2-30	11	25	56	3"/1.5"	139
	7.5	10	114		116
	11	15	110		158
	11	20	95		158
	15	25	90		173
	15	30	76		173
DJ-DLX-2-35	22	20	124	3"/2"	224
	22	25	120		224
	22	30	114		224
	30	35	110		257
	30	40	100		257
	30	45	93		257
	30	50	86		257

DLX-3选型表 DLX-3 selection table

型号 Model	功率 Power (KW)	流量 Flow rate (m³)	扬程 Discharge (M)	进口/出口 Inlet&outlet	裸泵 Weight (KG)
DJ-DLX-3-05	1.5	2	60	1.5"/0.75"	34
	2.2	4	50		34
	2.2	5	45		37
DJ-DLX-3-10	3	5	60	1.5"/1.5"	61
	4		67		
	4	8	60		67
	5.5	10	60		87
	5.5	15	54		87
DJ-DLX-3-15	5.5	5	84	2"/1.5"	93
	5.5	10	75		93
	7.5	15	65		104
DJ-DLX-3-20	11	10	103	2"/2"	143
	11	15	100		143
	15	20	94		151
	15	25	85		151
DJ-DLX-3-30	15	10	171	3"/1.5"	183
	18.5	15	165		213
	18.5	20	143		213
	22	25	135		226
	22	30	114		226
	DJ-DLX-3-35	37	20		185
37		25	180	316	
37		30	171	316	
37		35	165	316	
45		40	150	364	
45		45	140	364	
45		50	130	364	

DLX-2 系列离心泵数据图

DLX-2 series centrifugal pump data chart

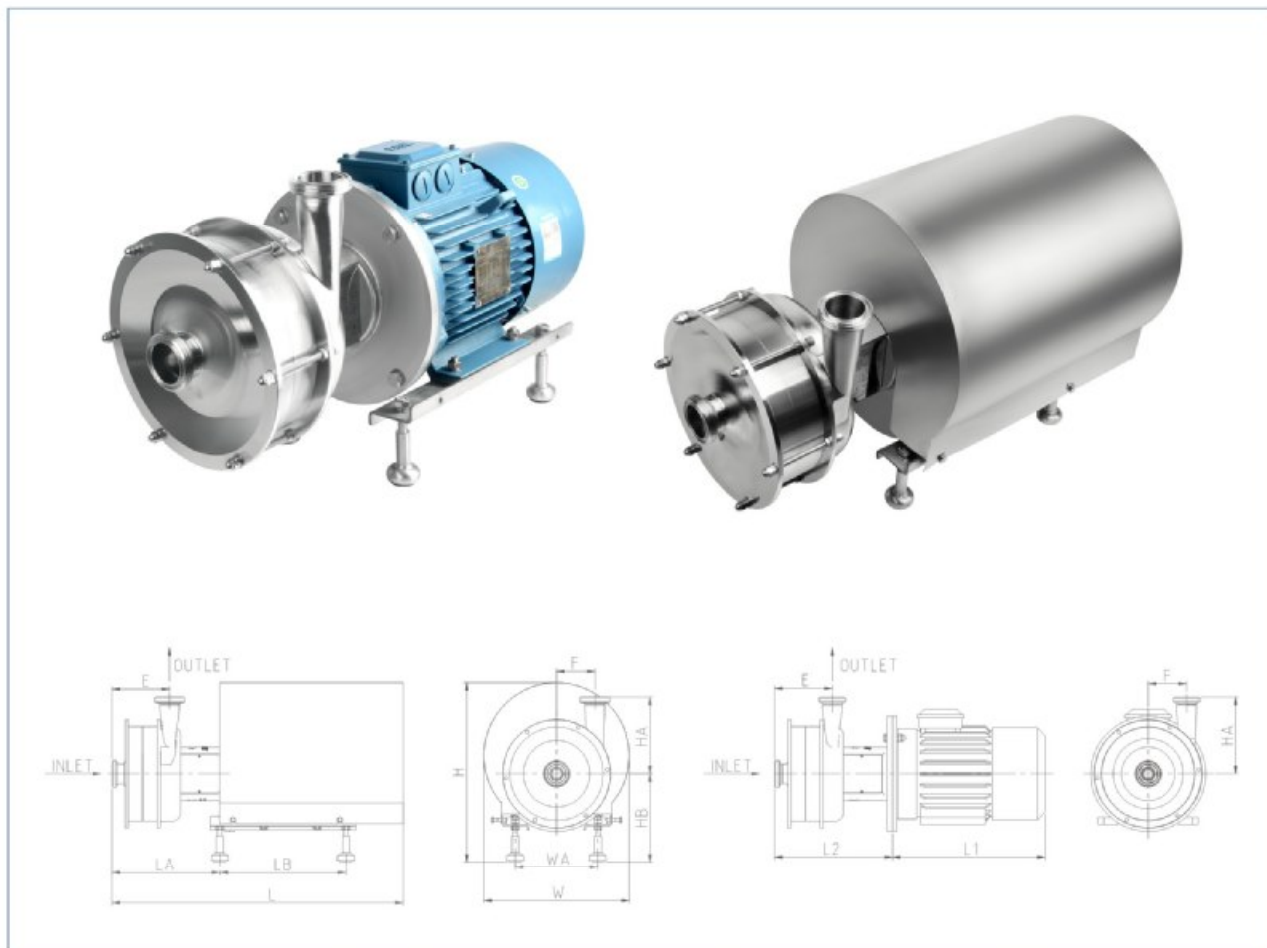


系列 Series (DLX-2)	外形安装尺寸 Assembly Dimension																								
	电机功率 Motor power (kw)	进口 Inlet	出口 Outlet	F	H	HB	LB	W	WA	L1	SMS螺纹连接 Thread			INCH卡箍连接 Clamped			DIN螺纹连接 Thread								
											E	LA	L	HA	L2	E	LA	L	HA	L2	E	LA	L	HA	L2
DLX-2-05	0.75-1.1KW	1.5"	0.75"	52.5	317.3	179	240	224	125	266	82	182.5	484.5	/	192.5	74.7	175.2	477.2	102.7	185.2	82	183	485	107	185
	1.5KW	1.5"	0.75"	52.5	337	189	240	250	140	235	82	178.5	488	/	202.5	74.7	171.2	481	102.7	195.2	82	178.5	488	107	202.5
DLX-2-10	2.2KW	1.5"	1.5"	76.5	362	209	240	260	140	301	105.5	214	579	150	238	98.2	206.7	571.7	142.7	230.7	105.5	214	579	150	238
	3KW	1.5"	1.5"	76.5	409	218	245	320	160	316	105.5	196	621	150	238	98.2	189	614	142.7	230.7	105.5	196	621	150	238
	4KW	1.5"	1.5"	76.5	414	211	300	340	190	351	105.5	203	622	150	238	98.2	196	615	142.7	230.7	105.5	203	622	150	238
DLX-2-15	3KW	2"	1.5"	98	409	218	245	320	160	316	102.5	191	616	180	233	95	184	609	173	226	102.5	191	616	180	233
	4KW	2"	1.5"	98	414	211	300	340	190	351	103	198	617	180	233	96	191	610	173	226	103	198	617	180	233
	5.5KW	2"	1.5"	98	468	231	330	380	216	399	103	232	711.5	180	233	96	225	704	173	226	103	232	711.5	180	233
DLX-2-20	7.5KW	2"	2"	100.5	468	231	330	380	216	399	151	256	735.5	200	282	143.7	248.7	728.2	193	274.7	152	257	737	201	283
	11KW	2"	1.5"	100.5	551	260	450	470	254	477	151	273.5	848.5	200	317	143.7	266.2	841.2	193	309.7	152	275	850	201	318
DLX-2-30	7.5KW	3"	1.5"	128	468	231	330	380	216	399	164	251	730.5	210	277	151.7	238.7	718.2	203	264.7	164	251	730.5	210	277
	11-15KW	3"	1.5"	128	551	260	450	470	254	477	164	268.5	843.5	210	312	151.7	256.2	831.2	203	299.7	164	268.5	843.5	210	312
DLX-2-35	22KW	3"	2"	141	585	281	510	510	279	573	195	286	961	235	334	182.7	273.7	946.7	228	321.7	195	286	961	236	334
	30KW	3"	2"	141	655.3	300.8	586	465	318	618	195	297	1007	235	334	182.7	284.7	994.7	228	321.7	195	297	1007	236	334

注意：以上数据图相关尺寸不作为实物最终依据，东正保留对于数据更新权限不再另行通知。
 Note: The relevant dimensions of the above data diagrams are not regarded as the final basis of the actual object.
 DONJOY reserves the right to update the data without further notice.

DLX-3 系列离心泵数据图

DLX-3 series centrifugal pump data chart



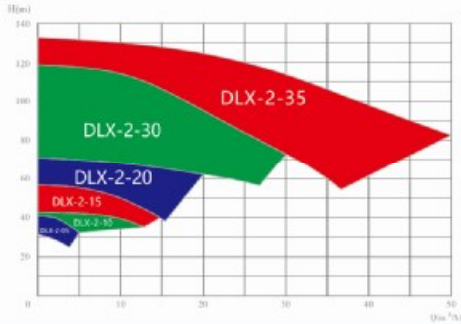
系列 Series (DLX-3)	外形安装尺寸 Assembly Dimension																								
	电机功率 Motor power (kw)	进口 Inlet	出口 Outlet	F	H	HB	LB	W	WA	L1	SMS螺纹连接 Thread					INCH卡箍连接 Clamped					DIN螺纹连接 Thread				
											E	LA	L	HA	L2	E	LA	L	HA	L2	E	LA	L	HA	L2
DLX-3-05	1.5-2.2KW	1.5"	0.75"	52.5	337	189	240	250	140	235	113	209.5	518	/	233.5	105.7	202.2	511	103	226.2	113	209.5	518	107	234
	3KW	1.5"	1.5"	76.5	409.3	218	245	320	160	316	152.5	243	668	150	285	145.2	235.7	660.7	142.7	277.7	152.5	243	668	150	285
DLX-3-10	4KW	1.5"	1.5"	76.5	414	211	300	340	190	351	152.5	250	669	150	285	145.2	235.7	660.7	142.7	277.7	152.5	250	669	150	285
	5.5KW	1.5"	1.5"	76.5	468	230.8	330	380	216	399	152.5	284	763.5	150	285	145.2	235.7	660.7	142.7	277.7	152.5	284	763.5	150	285
DLX-3-15	5.5-7.5KW	2"	1.5"	98	468	231	330	380	216	399	140.5	270	750	180	296	133.2	262.7	742.7	172.7	288.7	140.5	270	750	180	296
DLX-3-20	11-15KW	2"	2"	100.5	551	260	450	470	254	477	150.5	323.5	899.5	200	367	143.2	316	892	192.7	359	151.5	325	901	201	368
	15KW	3"	1.5"	128	551	260	450	470	254	476.5	164	315	890	210	358.5	156.7	307.7	882.7	202.7	351.2	164	315	890	210	358.5
DLX-3-30	18.5KW	3"	1.5"	128	551	260	450	470	254	477	164	315	890	210	358.5	156.7	307.7	882.7	202.7	351.2	164	315	890	210	358.5
	22KW	3"	1.5"	128	585.3	280.8	510	510	279	573	164	310	985	210	358.5	156.7	302.7	977.7	202.7	351.2	164	310	985	210	358.5
DLX-3-35	37KW	3"	2"	141	688.5	300	580	610	318	711	194.5	379.5	1169.5	235	397	182.2	367.2	1157.2	227.7	384.7	194.5	379.5	1169.5	236	397
	45KW	3"	2"	141	721.5	325	700	660	356	740	194.5	331.5	1199.5	235	397	182.2	319.2	1187.2	227.7	384.7	194.5	331.5	1199.5	236	397

注意：以上数据图相关尺寸不作为实物最终依据，东正保留对于数据更新权限不再另行通知。
 Note: The relevant dimensions of the above data diagrams are not regarded as the final basis of the actual object.
 DONJOY reserves the right to update the data without further notice.

DLX 系列离心泵曲线图

DLX series centrifugal pump graph

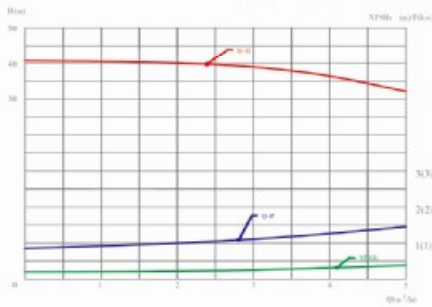
DJ-DLX-2离心泵Q-H曲线图
DJ-DLX-2 centrifugal pump Q-H curve



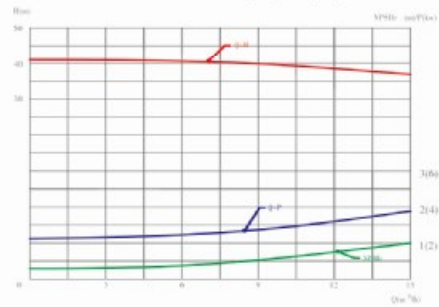
测试条件: 介质清水, 温度20℃, 叶轮转速2900 R.P.M
(此曲线图亦适用电机60Hz, 叶轮转速3600R.P.M) Q-流量(m³/H),
H-扬程(M), P-功率(KW), η%-泵效率。

Testing condition: medium water, temperature 20 °C, impeller speed 2900 RPM
(This graph also applies to motor 60HZ, impeller speed 3600RPM) Q-Flow rate
(m³/H), H-head (meter), P-power (KW), η % pump efficiency

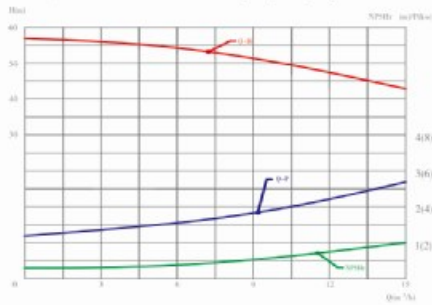
DJ-DLX-2-05 离心泵Q-H曲线图
DJ-DLX-2-05 centrifugal pump Q-H curve



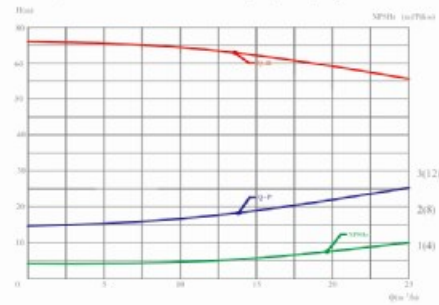
DJ-DLX-2-10 离心泵Q-H曲线图
DJ-DLX-2-10 centrifugal pump Q-H curve



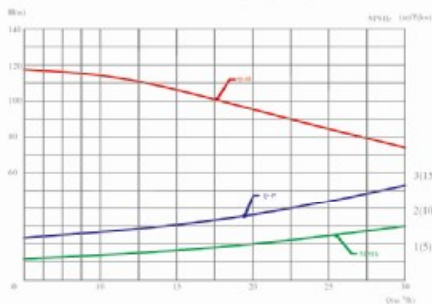
DJ-DLX-2-15 离心泵Q-H曲线图
DJ-DLX-2-15 centrifugal pump Q-H curve



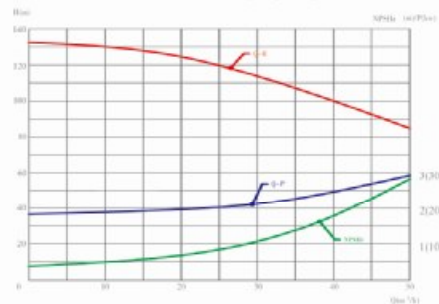
DJ-DLX-2-20 离心泵Q-H曲线图
DJ-DLX-2-20 centrifugal pump Q-H curve



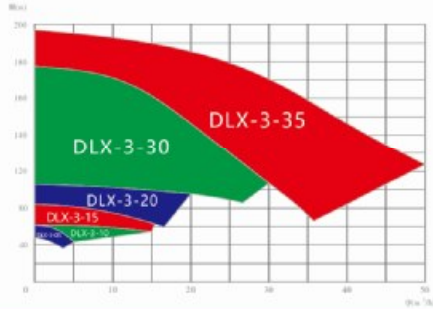
DJ-DLX-2-30 离心泵Q-H曲线图
DJ-DLX-2-30 centrifugal pump Q-H curve



DJ-DLX-2-35 离心泵Q-H曲线图
DJ-DLX-2-35 centrifugal pump Q-H curve



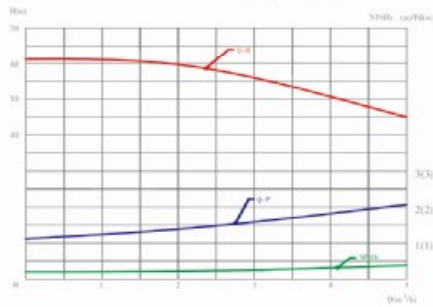
DJ-DLX-3离心泵Q-H曲线图
DJ-DLX-3 centrifugal pump Q-H curve



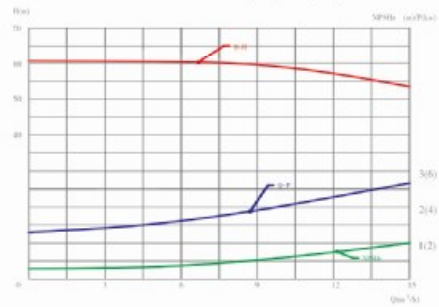
测试条件: 介质清水, 温度20℃, 叶轮转速2900 R.P.M
(此曲线图亦适用电机60Hz, 叶轮转速3600R.P.M) Q-流量(m³/h),
H-扬程(M), P-功率(KW), η %-泵效率。

Testing condition: medium water, temperature 20 °C, impeller speed 2900 RPM
(This graph also applies to motor 60HZ, impeller speed 3600RPM) Q-Flow rate
(m³/h), H-head (meter), P-power (KW), η % pump efficiency

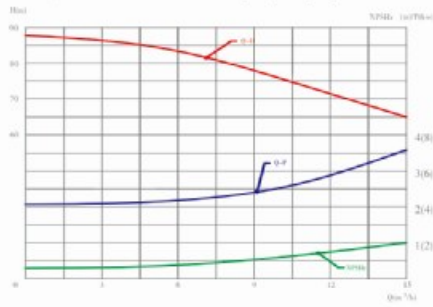
DJ-DLX-3-05 离心泵Q-H曲线图
DJ-DLX-3-05 centrifugal pump Q-H curve



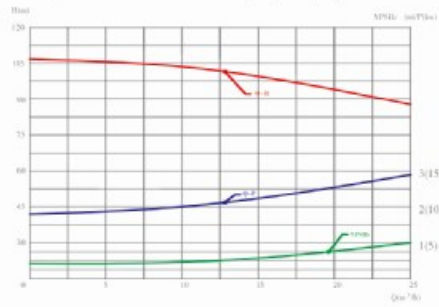
DJ-DLX-3-10 离心泵Q-H曲线图
DJ-DLX-3-10 centrifugal pump Q-H curve



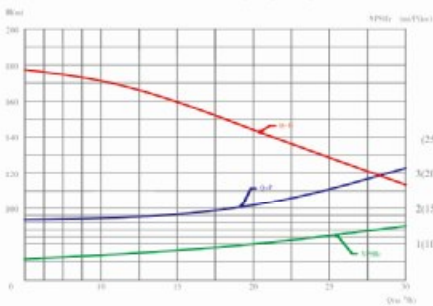
DJ-DLX-3-15 离心泵Q-H曲线图
DJ-DLX-3-15 centrifugal pump Q-H curve



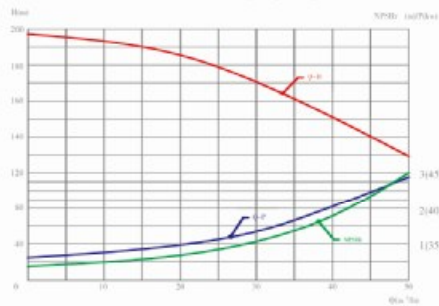
DJ-DLX-3-20 离心泵Q-H曲线图
DJ-DLX-3-20 centrifugal pump Q-H curve



DJ-DLX-3-30 离心泵Q-H曲线图
DJ-DLX-3-30 centrifugal pump Q-H curve



DJ-DLX-3-35 离心泵Q-H曲线图
DJ-DLX-3-35 centrifugal pump Q-H curve





DONJOY looking forward to your visit! Your telecommunications!



东正科技有限公司 DONJOY TECHNOLOGY CO., LTD

地址: 温州空港新区港富路25号
总机: 0577 8699 0888
传真: 0577 8699 8000

ADD: No.25 Gangfu Road, Konggang
New District, Longwan, Wenzhou, China
TEL: +86 577 8699 0888
FAX: +86 577 8699 8000
E-mail: donjoy@cndonjoy.com

www.cndonjoy.com

法律声明:

目录样册版权归东正所有, 如有抄袭, 必将追究其法律责任和经济赔偿。
东正已获得国家版权局书刊号。东正诸多产品技术, 都具有专利保护, 如有抄袭, 必将追究法律责任和经济赔偿。

Legal statement:

Copyright of the catalogue belongs to Donjoy. If there is plagiarism, it will be investigated for legal responsibility and economic compensation. Donjoy has been granted publications number by Chinese National Copyright. Donjoy products and technology are with patent protection. If there is plagiarism, it will be investigated for legal responsibility and economic compensation.